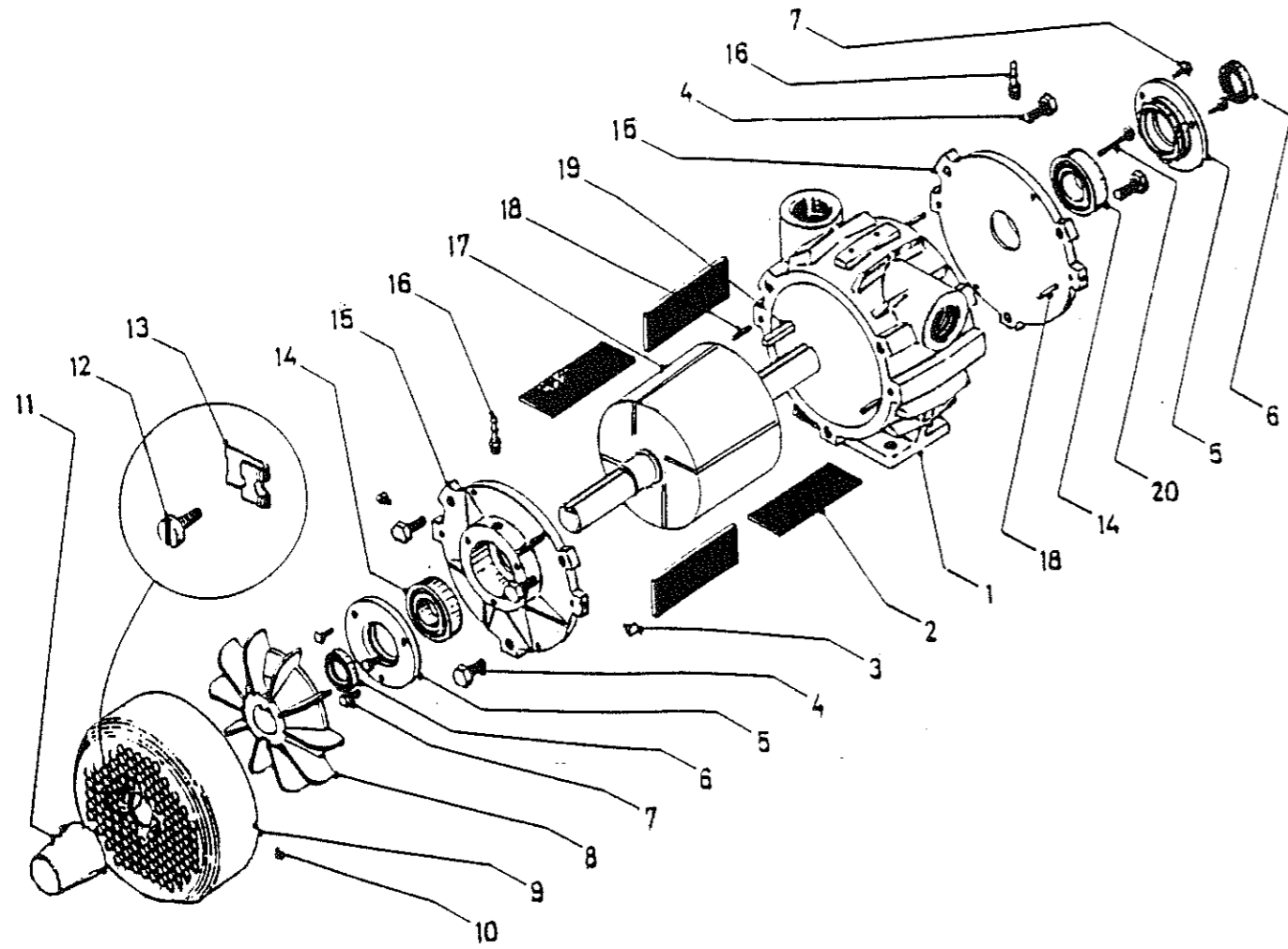


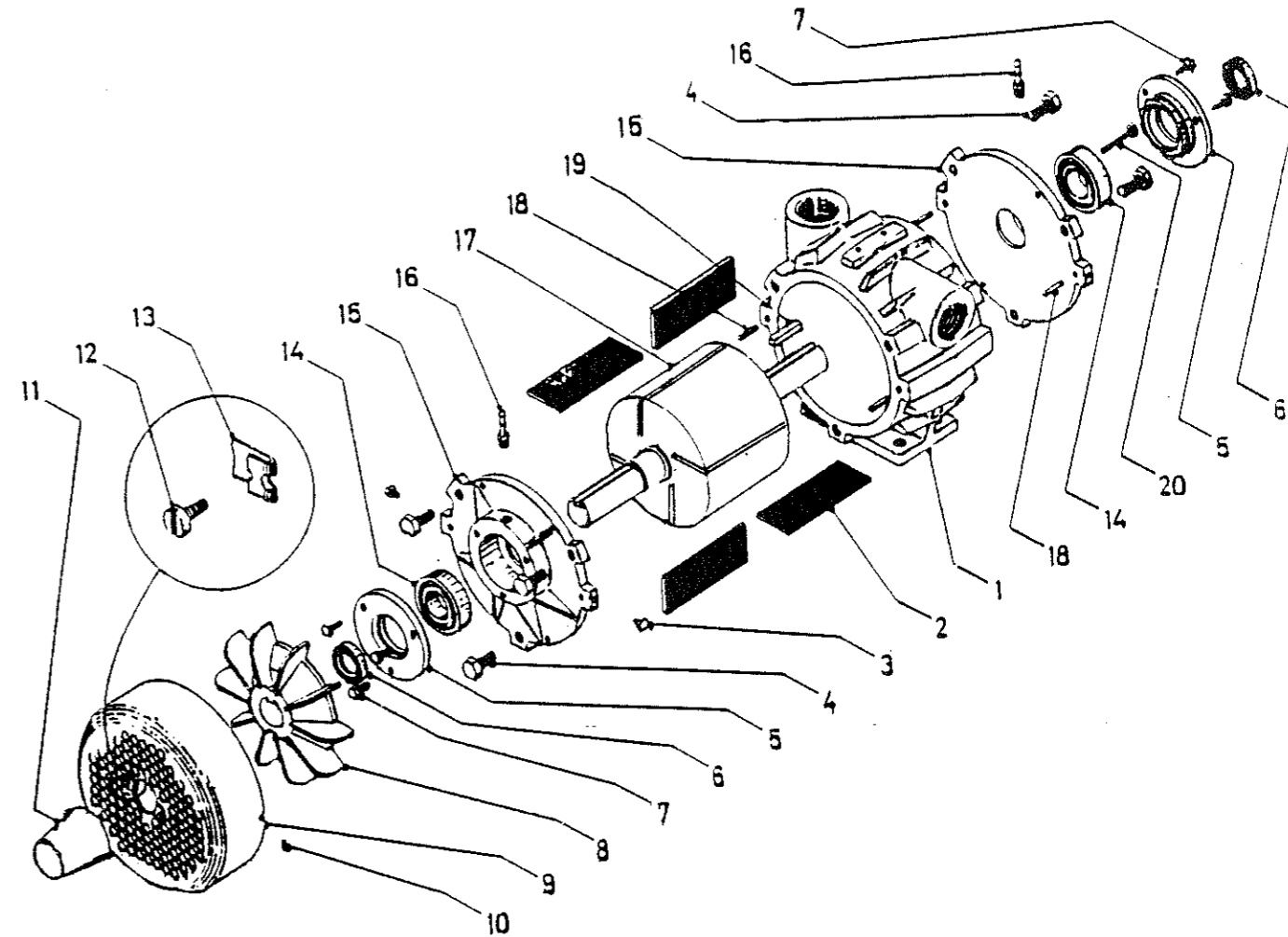
FULLWOOD RANGE OF VACUUM PUMP
Q3 VACUUM PUMP ASSEMBLY



ITEM NO	PT.NO	DESCRIPTION
1	41408	PUMP BODY FR3, Q3
2	41855	ROTOR BLADE
3	00626	FAN COVER FIXING SCREW
4	00678	END CAP FIXING SCREW FR2, 3, 4, 4S, Q3 AND Q4
5	41738	BEARING PLATE FR4S, Q3 AND Q4 (END PLATE)
6	07606	OIL SEAL
7	00909	BEARING PLATE FIXING SEAL
8	41739	FAN
9	41589	FAN COVER
10	00944	GRUBSCREW
11	41599	SHAFT COVER
12	00941	SELF TAPPING SCREW
13	05810	'J' CLIP
14	07553	BEARING FR4S, Q3 AND Q4
15	41849	END CAP Q TYPE
16	03510	SCREW-IN SOCKET
17	41853	ROTOR Q3
18	01924	DOWEL
19	46193	KEY
20	00680	END CAP REMOVAL SCREW

A/1/8/92/24

FULLWOOD RANGE OF VACUUM PUMPS
Q4 VACUUM PUMP ASSEMBLY



ITEM NO	PT.NO.	DESCRIPTION
1	41409	PUMP BODY FR4, FR4S AND Q4
2	41842	ROTOR BLADE
3	00626	FAN COVER FIXING SCREW
4	00678	END CAP FIXING SCREW FR2, 3, 4, 4S AND Q4
5	41738	BEARING PLATE FR4S AND Q4 (END PLATE)
6	07606	OIL SEAL
7	00909	BEARING PLATE FIXING SCREW
8	41739	FAN
9	41589	FAN COVER
10	00944	GRUBSCREW
11	41599	SHAFT COVER
12	00941	SELF TAPPING SCREW
13	05810	'J' CLIP
14	07553	BEARING FR4S AND Q4
15	41849	END CAP Q4
16	03510	SCREW-IN SOCKET
17	41841	ROTOR Q4
18	01924	DOWEL
19	46193	KEY
20	00680	END CAP REMOVAL SCREW

A/1/8/92/25